



# GROUP EXPERIENCES

## a class above the rest



There's no better place to get the band back together than at Graduate Eugene. Our hotel sits in the heart of downtown, next door to the Hult Center and close to the University of Oregon campus. Sports venues, including Autzen Stadium, Matthew Knight Arena and Hayward Field, are also nearby.

With 275 rooms and 30,000 square feet of event space, Graduate Eugene features a variety of spaces and amenities to best meet your group's needs. Gather your crew for a round or two in our Topgolf Swing Suite®, meet for morning lattes at Poindexter Coffee, our lobby-level café, or host an all-out bash in one of our standout ballrooms.

Whether you are booking a wedding block or interested in a group room rate for a business meeting, our warm, friendly, and whip-smart staff is here to make your experience memorable.

### Hotel Highlights

Located in downtown Eugene

275 rooms

Two on-site dining options

Topgolf Swing Suite

24-hour fitness center with Peloton bikes

Complimentary airport shuttle

30,000 square feet of meeting & event space

Creative culinary team to oversee catering & the creation of custom event menus

### Additional Amenities

Complimentary wi-fi

Complimentary bike rentals

Malin + Goetz toiletries

Pet friendly

**Graduate**  
EUGENE

#### LOCATION

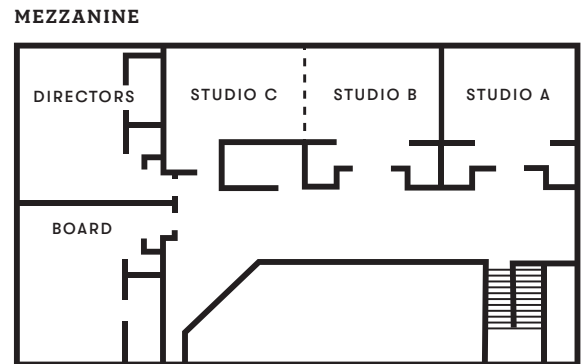
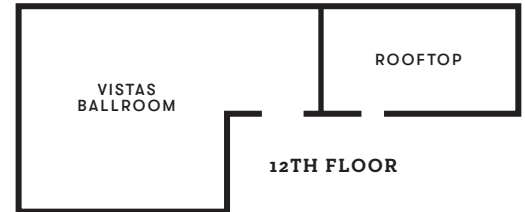
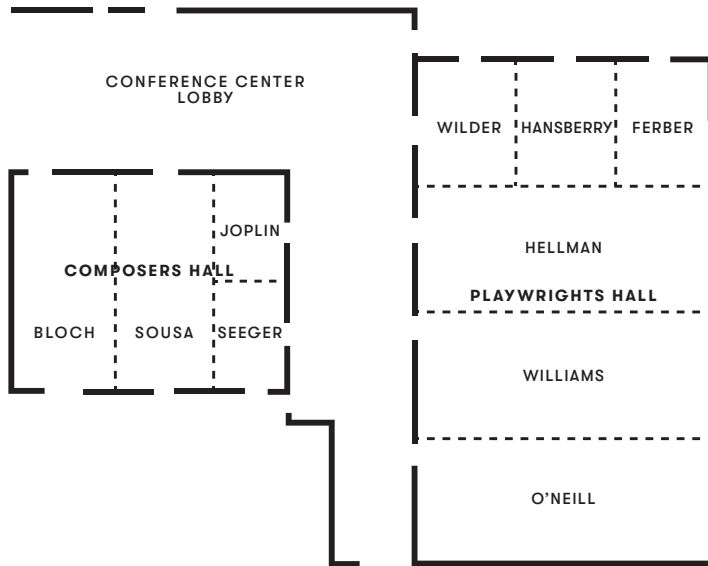
66 East 6th Avenue  
Eugene, OR 97401

#### CONTACT

Tel: 541 342 2000  
info@graduateeugene.com

# EVENT SPACE

## floor plans



	MEETING ROOM	SQ. FOOTAGE	DIMENSIONS	THEATER	CLASSROOM	BANQUET
	Playwrights Hall	11,620	83' x 140'	1,400	700	800
	O'Neill Room	2,988	83' x 36'	300	200	220
	Williams Room	2,988	83' x 36'	300	200	220
	Hellman Room	2,988	83' x 36'	300	200	220
	Wilder Room	2,656	83' x 32'	200	100	140
	Composers Hall	4,453	61' x 73'	400	200	240
	Bloch Room	1,647	61' x 27'	150	70	96
	Sousa Room	1,647	61' x 27'	150	70	96
	Joplin Room	570	30' x 19'	40	20	24
	Seeger Room	570	30' x 19'	40	20	24
	Conference Lobby	8,000	-	-	-	-
<b>MEZZANINE</b>	Studio A, B or C	500	25' x 20'	30	20	32
	Directors or Board	600	20' x 30'	30	20	32
<b>12TH FLOOR</b>	Vistas Ballroom	3,890	82' x 21'	150	60	128
	Rooftop	1,600	80' x 20'	128	-	128

Capacities of the rooms may vary depending on function and setup.



### LOCATION

66 East 6th Avenue  
Eugene, OR 97401

### CONTACT

Tel: 541 342 2000  
info@graduateeugene.com